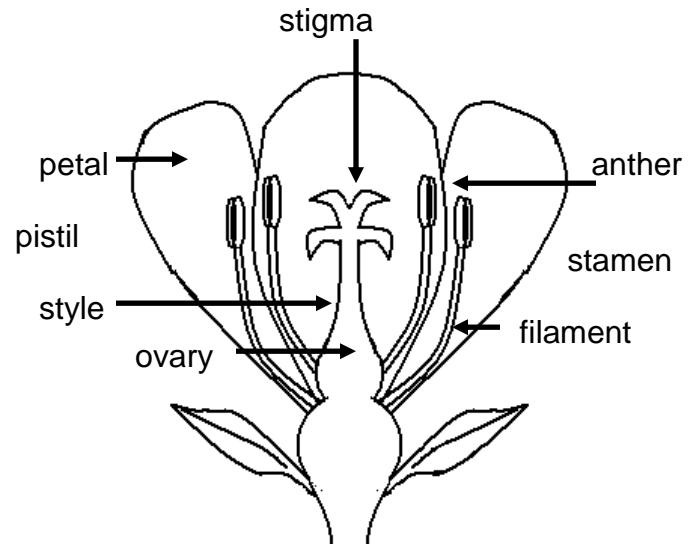


## Pollination

### Reading and Discussion

Why do you think so many plants have pretty and colorful flowers which smell so nice? Not just for us to look at and to smell!

Plants have a much more important reason. They use the color and scent of their flowers to attract animals, birds and insects. Here's why:



Plants have to be pollinated in order to make seeds and **reproduce** themselves. Plants reproduce by transferring **pollen** from the **anther** of one flower to the **stigma** of another, or even to the anther of the same flower.

- The **filament** and the **anther** form the male part of the flower, called the **stamen**.
- The **style**, the **stigma** and the **ovary** form the female part of the flower, called the **pistil**.

When the pollen joins with the **ovule** in the ovary of the flower, it begins to form the seeds. When this happens in the same plant it is called **self-pollination**. When it happens between two different plants it is called **cross-pollination**.

Animals, birds, fish and insects look for mates in order to reproduce. Since plants can't walk, swim or fly, most of them need help moving the pollen from one flower to another. Some plants are pollinated by the wind, but many of them produce flowers to attract **pollinators**.

Pollinators include bees, butterflies, moths, wasps and even humming birds. When the pollinators feed on the nectar of the flower, the pollen sticks to their bodies and then rubs off on the stigma of the next flower. The colors of the flowers attract butterflies and birds. Night pollinators, like moths, are attracted by the scent.

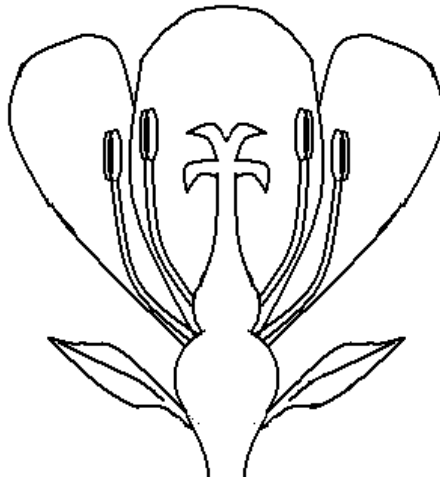
Name \_\_\_\_\_

Date \_\_\_\_\_

## Activities

### A. Do you know the parts of the flower?

Here is the diagram of the flower again. Can you fill in the missing parts? There is a list of names in the box on the side to help you.



stigma  
anther  
petal  
ovary  
style  
filament

### B. What have you learnt about pollination?

Can you fill in the missing words in the following sentences?

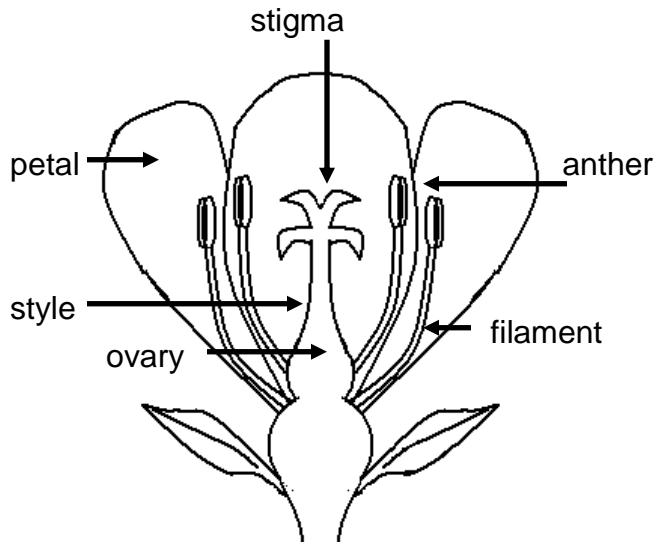
1. The stamen is the ..... part of the flower.
2. The pistil is the ..... part of the flower
3. The ..... and the ..... make up the stamen
4. The ....., the ..... and the ..... make up the pistil
5. Flowers reproduce by transferring pollen from the ..... to the .....
6. The pollen joins with the ..... to form seeds.
7. Pollination between different plants is called .....
8. Animals which transfer pollen from one flower to another are called .....

Name \_\_\_\_\_

Date \_\_\_\_\_

## Answer Key

### Activity A



### Activity B

1. The stamen is the male part of the flower.
2. The pistil is the female part of the flower.
3. The anther and the filament make up the stamen.
4. The style, the stigma and the ovary make up the pistil.
5. Flowers reproduce by transferring pollen from the anther to the stigma.
6. The pollen joins with the ovule to form seeds.
7. Pollination between different plants is called cross-pollination.
8. Animals which transfer pollen from one flower to another are called pollinators.